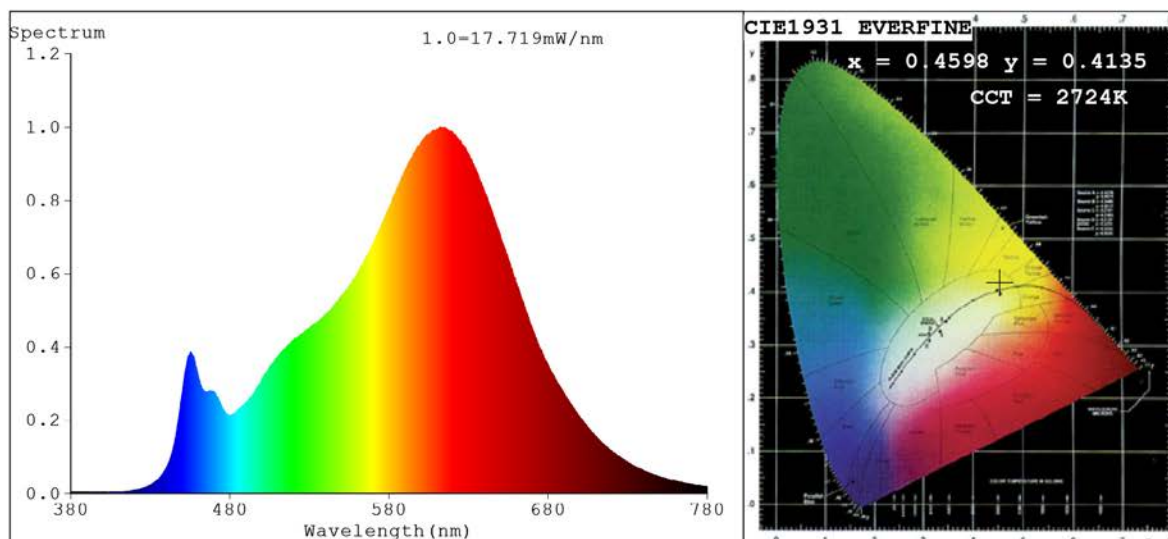


Spectrum Test Report



Color Parameters:

Chromaticity Coordinate: $x=0.4598$ $y=0.4135$ $u'=0.2611$ $v'=0.5284$
 CCT=2724K (Duv=0.0011) Dominant WL: $\lambda_d = 583.7\text{nm}$ Purity=62.1%
 Ratio: R=25.7% G=71.6% B=2.6%; Peak WL: $\lambda_p = 612.4\text{nm}$ FWHM=122.9nm
 Render Index: Ra=87.7 CRI=84.3 TM30: Rf=86 Rg=95
 R1 =88 R2 =96 R3 =95 R4 =86 R5 =88 R6 =97 R7 =85
 R8 =67 R9 =31 R10=91 R11=88 R12=81 R13=90 R14=98 R15=80

Photo Parameters:

Flux = 811.0 lm Eff. : 79.88 lm/W Φ_e = 2.613 W

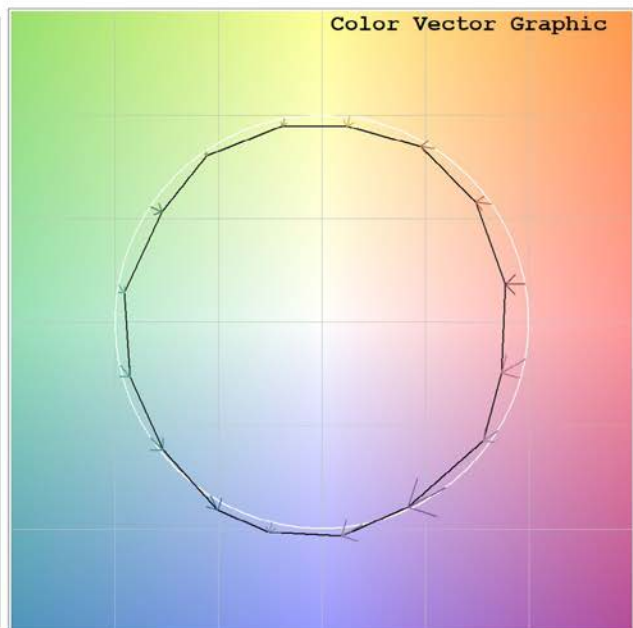
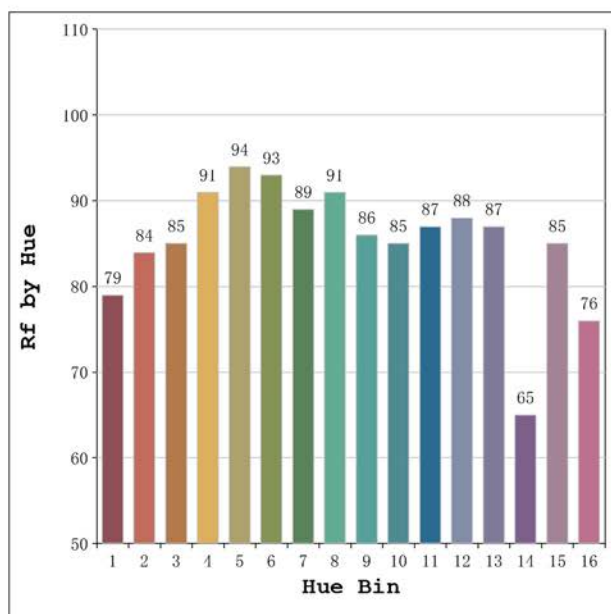
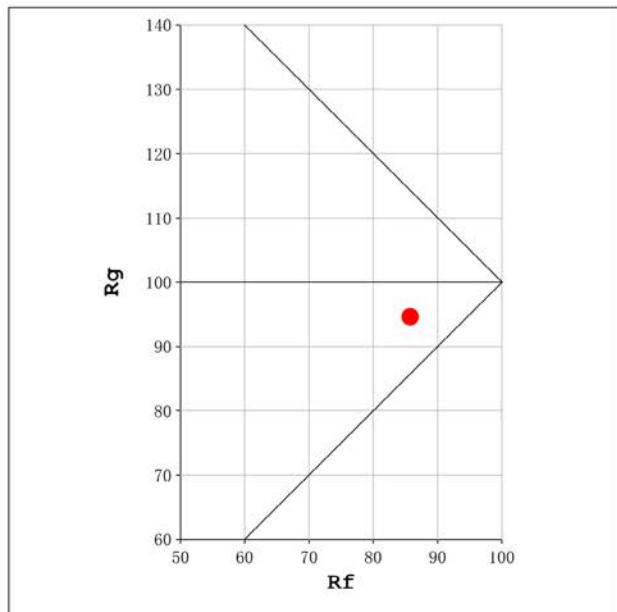
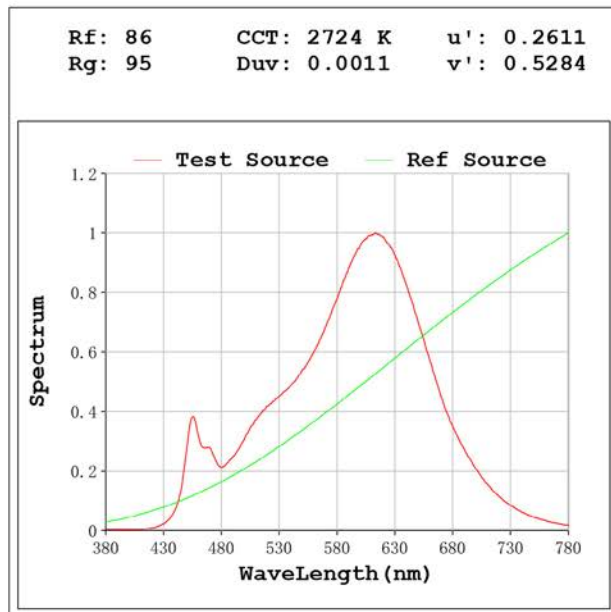
Electrical parameters:

V = 23.998 V I = 0.4231 A P = 10.15 W PF = 1.000

Status: Integral T = 1000 ms I_p = 34703 (53%)

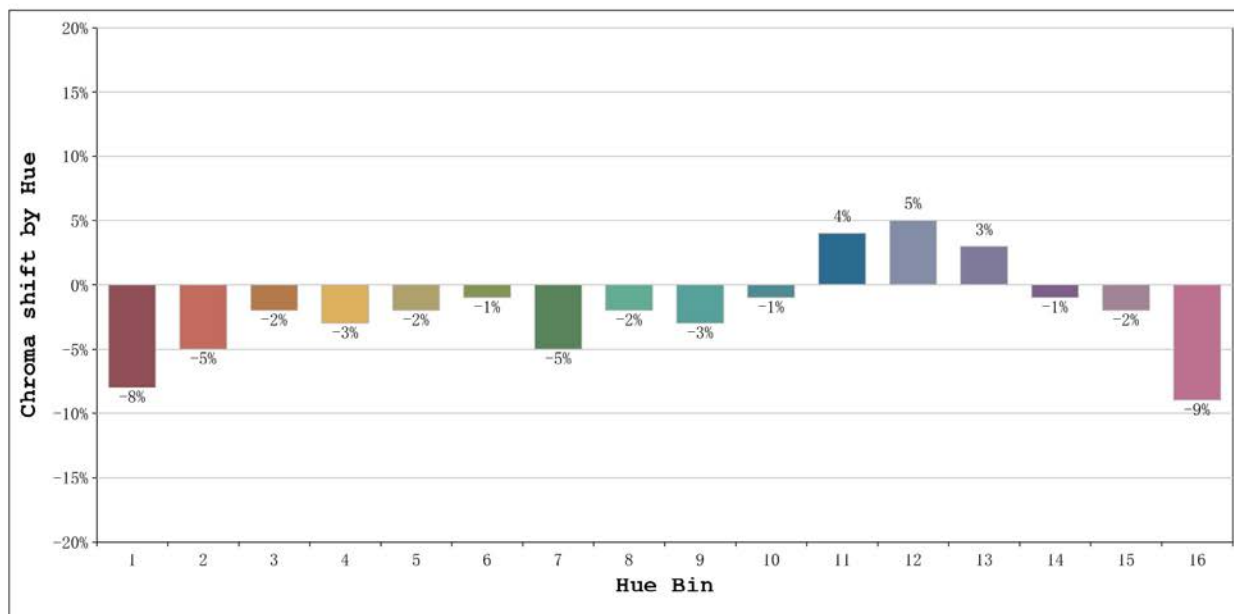
Model: Vizcaya pro 2800K
 Tester: Sergio Carneros
 Temperature: Deg
 Manufacturer: Luz Negra S.L

Number: 33.206
 Date: 2024-12-19 10:28:47
 Humidity: 40%
 Remarks: 100cm de tira flexible



Model: Vizcaya pro 2800K
 Tester: Sergio Carneros
 Temperature: Deg
 Manufacturer: Luz Negra S.L

Number: 33.206
 Date: 2024-12-19 10:28:47
 Humidity: 40%
 Remarks: 100cm de tira flexible



			Graphic shift(%)	
Hue Bin	Hue Angle	Rf	Chroma	Hue
1	0.0° - 22.5°	79	-8	2
2	22.5° - 45.0°	84	-5	5
3	45.0° - 67.5°	85	-2	6
4	67.5° - 90.0°	91	-3	0
5	90.0° - 112.5°	94	-2	1
6	112.5° - 135.0°	93	-1	1
7	135.0° - 157.5°	89	-5	0
8	157.5° - 180.0°	91	-2	3
9	180.0° - 202.5°	86	-3	6
10	202.5° - 225.0°	85	-1	8
11	225.0° - 247.5°	87	4	7
12	247.5° - 270.0°	88	5	0
13	270.0° - 292.5°	87	3	-10
14	292.5° - 315.0°	65	-1	-19
15	315.0° - 337.5°	85	-2	-7
16	337.5° - 360.0°	76	-9	-8

Model:Vizcaya pro 2800K
 Tester:Sergio Carneros
 Temperature:Deg
 Manufacturer:Luz Negra S.L

Number: 33.206
 Date:2024-12-19 10:28:47
 Humidity:40%
 Remarks:100cm de tira flexible